

TOS800-III

TETRA/ MOTOTRBO™ desk console

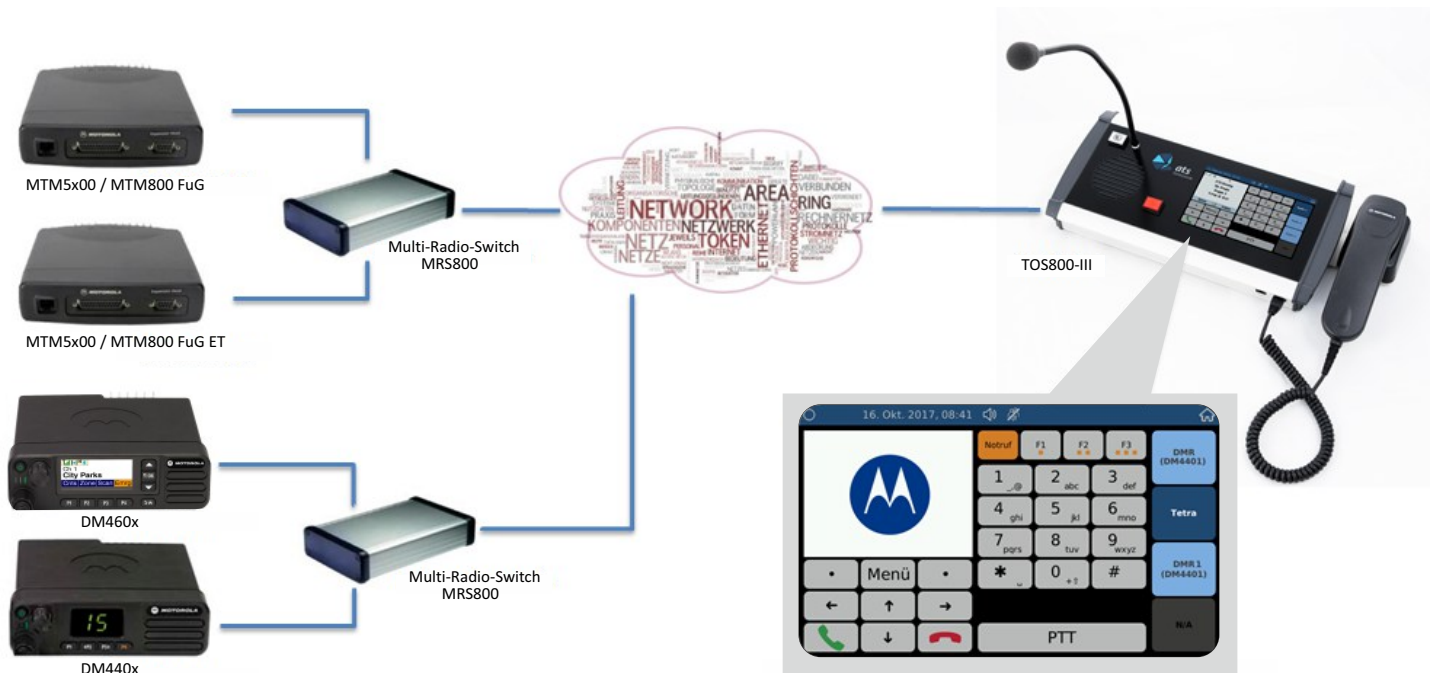


fig. system scetch

Application

- Comfortable operation of up to four remote MOTOROLA radio sets
- Both TETRA and MOTOTRBO™ possible: MTM5x00 series / MTM800 FuG / MTM800 FuG ET / DM4xxx and DM4xxx series
- TETRA and MOTOTRBO™ radios can be operated at the same time
- Full and remote operation of the radio devices via standard IP-LAN / WAN (VPN).
- Multi-functional touch screen in the style of the known Motorola design:
 - Select and operate radios
 - Audio setting (e.g. volume) of selected and non-selected radios
 - System settings (IP address, user password and more)
 - Radios are connected via our MRS800 Multi Radio Switch (two radios for each MRS800)
- Radios can also be connected via a DRC9010 Server (four radios for each DRC9010 Server). In combination with the DRC9010 Software, the radios in the network can then be operated both with the TOS800-III and the software interface.
- Comfortable, password protected configuration directly at the device or via the web interface

Technical Data

- Compact aluminium housing
- Capacitive 7" touchscreen
- Built-in speaker (can be switched off)
- Hardware PTT button and soft PTT button on the touch display
- Gooseneck microphone (length: 385 mm)
- Accessory connectors (front)
 - ATS handset
 - ATS headset
- Built in accessory connectors (back)
 - Ethernet cable
 - External PTT
 - Second speaker
- Power supply 230VAC/50Hz (power supply unit part of delivery)
- Protection class IP40
- Dimensions in mm (without handset): 375x184x68 mm (l x w x h)
- Dimensions in mm (with handset): 448x184x68 mm (l x w x h)
- Weight: 2100 g with no accessories



MOTOTRBO™



MOTOROLA SOLUTIONS
Autorisierter BOS-Partner



MOTOROLA SOLUTIONS
Value Added Reseller

ATS Elektronik GmbH · Albert-Einstein-Str. 3 · 31515 Wunstorf · Germany
Telefon: +49 (0) 50 31 / 95 48 – 0 · E-Mail: info@ATSONline.de · www.ATSONline.de

All technical data and functions serve as orientation and may be modified without previous notice.